



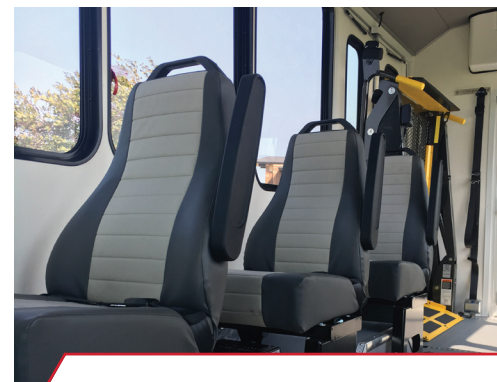
## T SERIES

Precisely engineered to be lighter, stronger and safer. Built on the most reliable drive train available, the World Trans 21T and 23T give you greater efficiency with less fuel. Superior front-end visibility improves safety for drivers and up to 17\* passengers. The unique modular construction creates a quiet, durable, more fuel efficient bus, with less waste constructed in a fraction of the time and put together in a smart looking package.

### Driving Intelligence

- Exclusive modular construction provides unparalleled flexibility, safety and style
- Large view-out window reduces blind-spots and enhances visibility
- Spacious interior with maximum window visibility enhance the passenger experience
- High-strength rust proof steel flooring, roof and walls provide superior durability
- Increased seating capacity and improved fuel efficiency are enabled by an incredibly strong and lightweight structure
- Fiberglass front and rear caps produce a clean, sleek and modern look
- Meets or exceeds ADA and FMVSS requirements including FMVSS220

\*Varies based on your state and the options selected. \*Photo shown with optional equipment.





### STANDARD CHASSIS EQUIPMENT

Engine	3.7L Gas V6 3.2L Diesel
Transmission	6-Speed Auto w/Overdrive
Fuel Tank	25 Gallon
Brakes	Power w/4 wheel anti-lock
Alternator	250 Amp. Gas 210 Amp. Diesel

### STANDARD

- Rust Proof Steel Structure
- Composite Exterior Panels
- Insulation
- 5/8" Plywood Flooring
- LED Interior Dome lights (3)
- LED Stop/CMBL/Turn/Backup Lights
- Tinted 40" x 30" Solid Pane Windows
- Rear-View Flat/Convex Mirrors
- Commercial Seats
- Fiberglass Molded Front and Rear Cap
- Removable Molded Skirts
- Dual OEM Batteries
- OEM Driver Seat

### POPULAR OPTIONS

- 3-Point Seats
- 3/4" Marine-Grade Plywood Floor
- AM/FM/BT(ⓧ) Radio
- Backup Alarm
- Backup Camera
- Battery Compartment
- Colored Flooring
- Interior Mirrors
- Rear Heater
- Rear In-Wall A/C
- Rear Luggage Wall
- Reverse Backup Sensors
- Roof Escape Hatch
- Spare Tire
- Stainless Steel Wheel Covers
- Tinted 40" x 30" Top Vented Windows

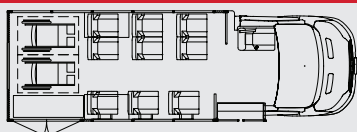
\*Please see your sales person to determine which options are available in your model of choice.

### SPECIFICATIONS

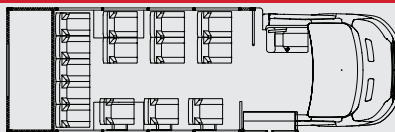
MODEL	21T	23T
Maximum Passenger Capacity	14	17
Interior Height at Center Aisle	80"	80"
Interior Width	84"	84"
Electric Entrance Door	36"/44"	36"/44"
Overall Height	114"	114"
Overall Length with Bumper	252"	276"
Overall Width with No Mirrors	88"	88"
Wheelbase	156"	156"
GVWR	10,360	10,360

\*Varies based on state and option selected. \*\*Various passenger/wheelchair configurations available.

### POPULAR FLOOR PLANS



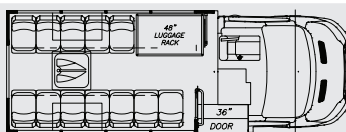
**23T**  
9 & 2 with Rear Lift



**23T**  
14 Passenger with Rear Luggage



**21T**  
14 Passenger



**21T**  
12 Passenger with Luggage Rack

Due to ongoing engineering improvements, Eldorado reserves the right to make changes without notification.  
Please visit us online to view additional floor plans.

### AUTHENTIC, AUTHORIZED.

PLEASE PURCHASE WORLD TRANS  
PRODUCTS & ACCESSORIES FROM  
AUTHORIZED DEALERS REQUIRED TO  
MEET OUR HIGH CUSTOMER SERVICE  
& SUPPORT STANDARDS.